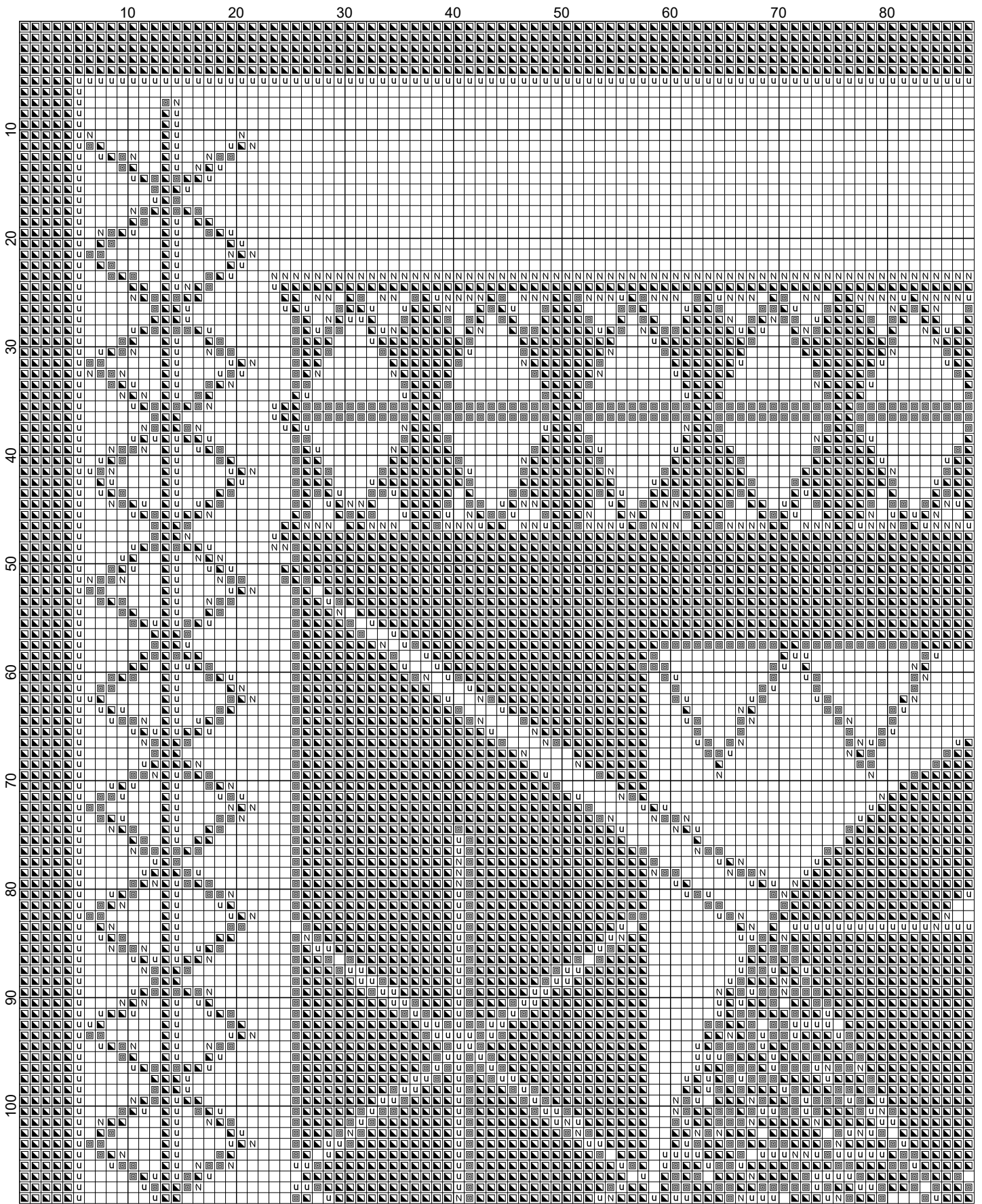
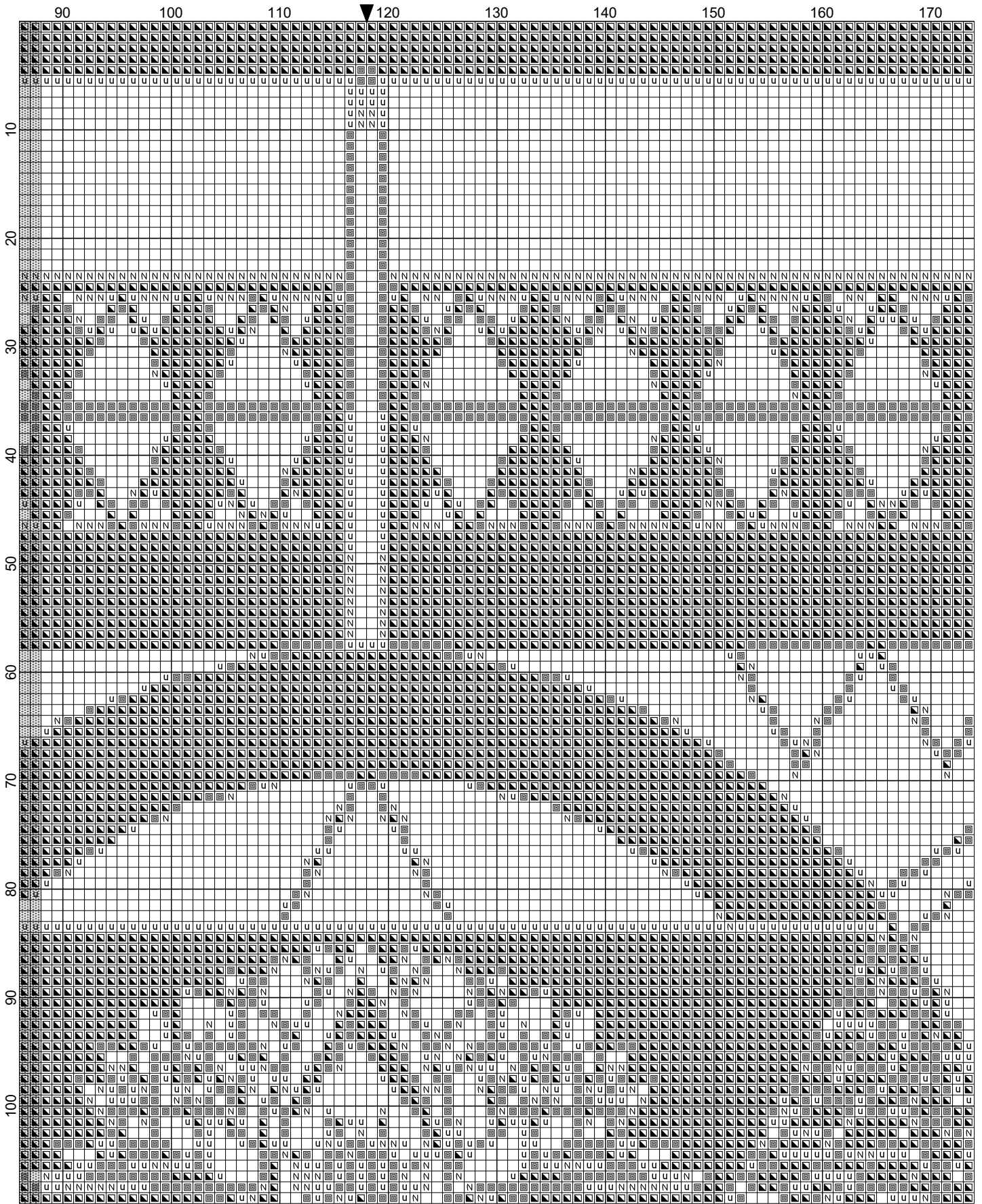


The Elements by Lisa Lambson



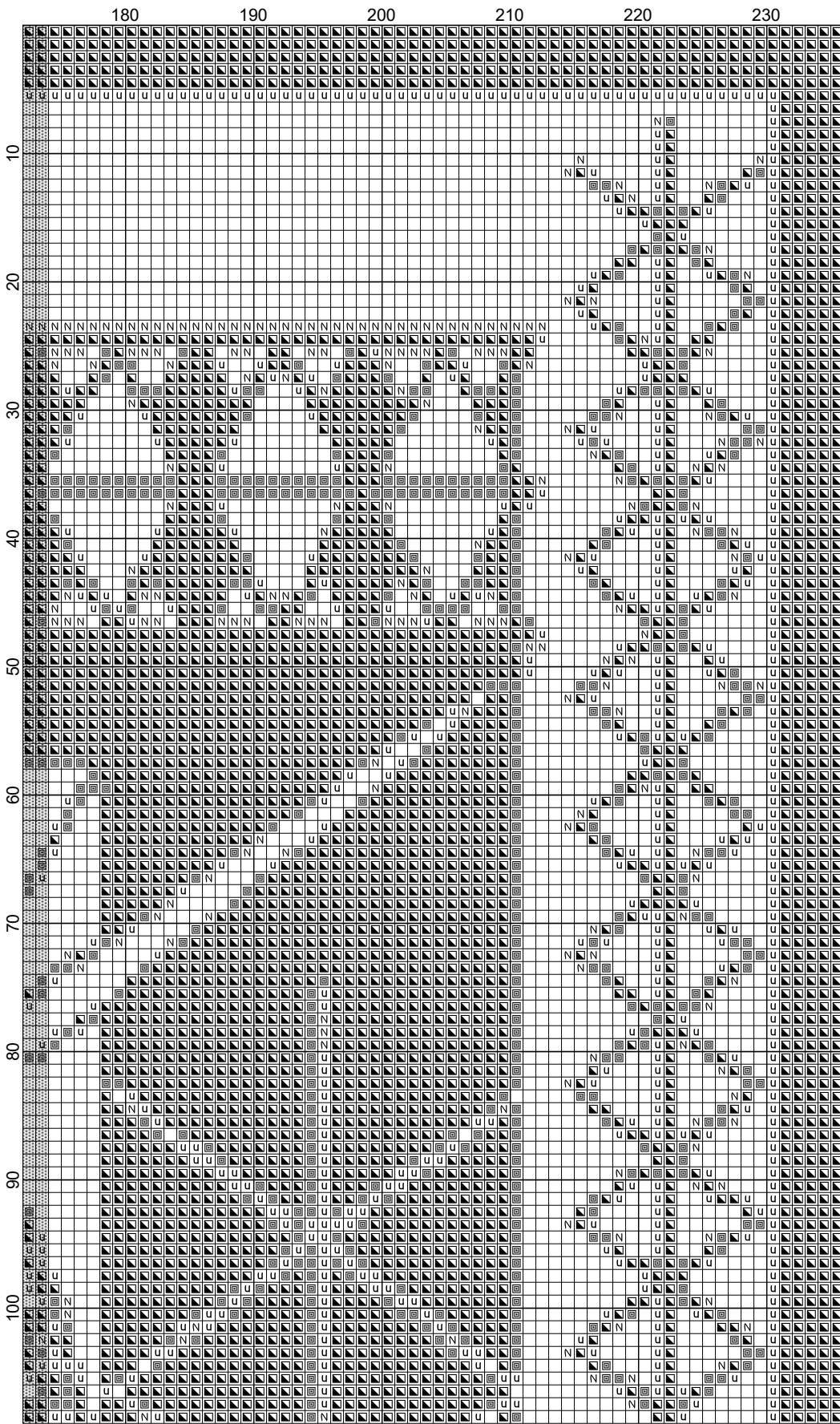
2017

The Elements by Lisa Lambson



2017

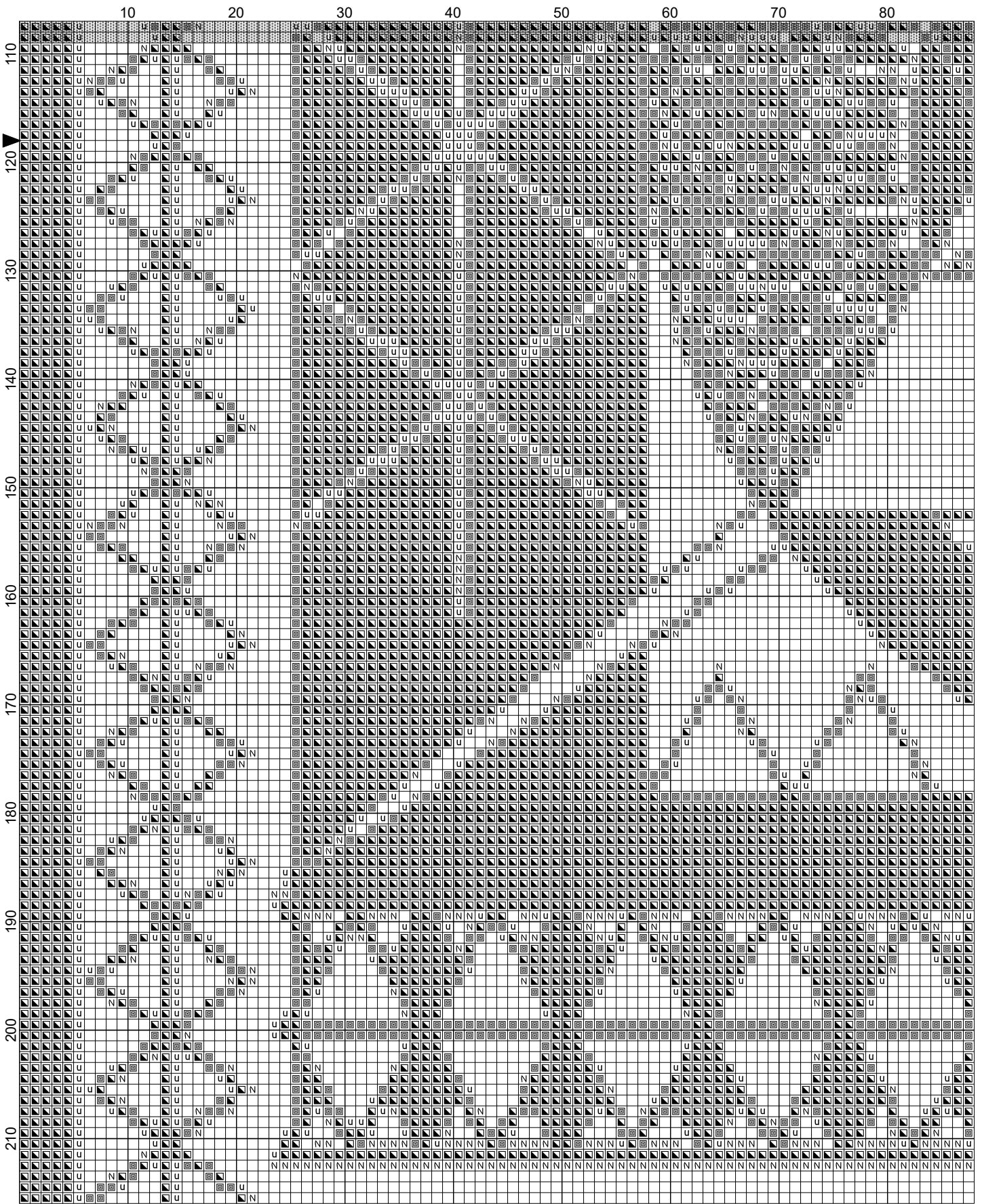
The Elements by Lisa Lambson



- Legend:
- U DMC-3766
 - Z DMC-807
 - N DMC-762
 - ◻ DMC-3765

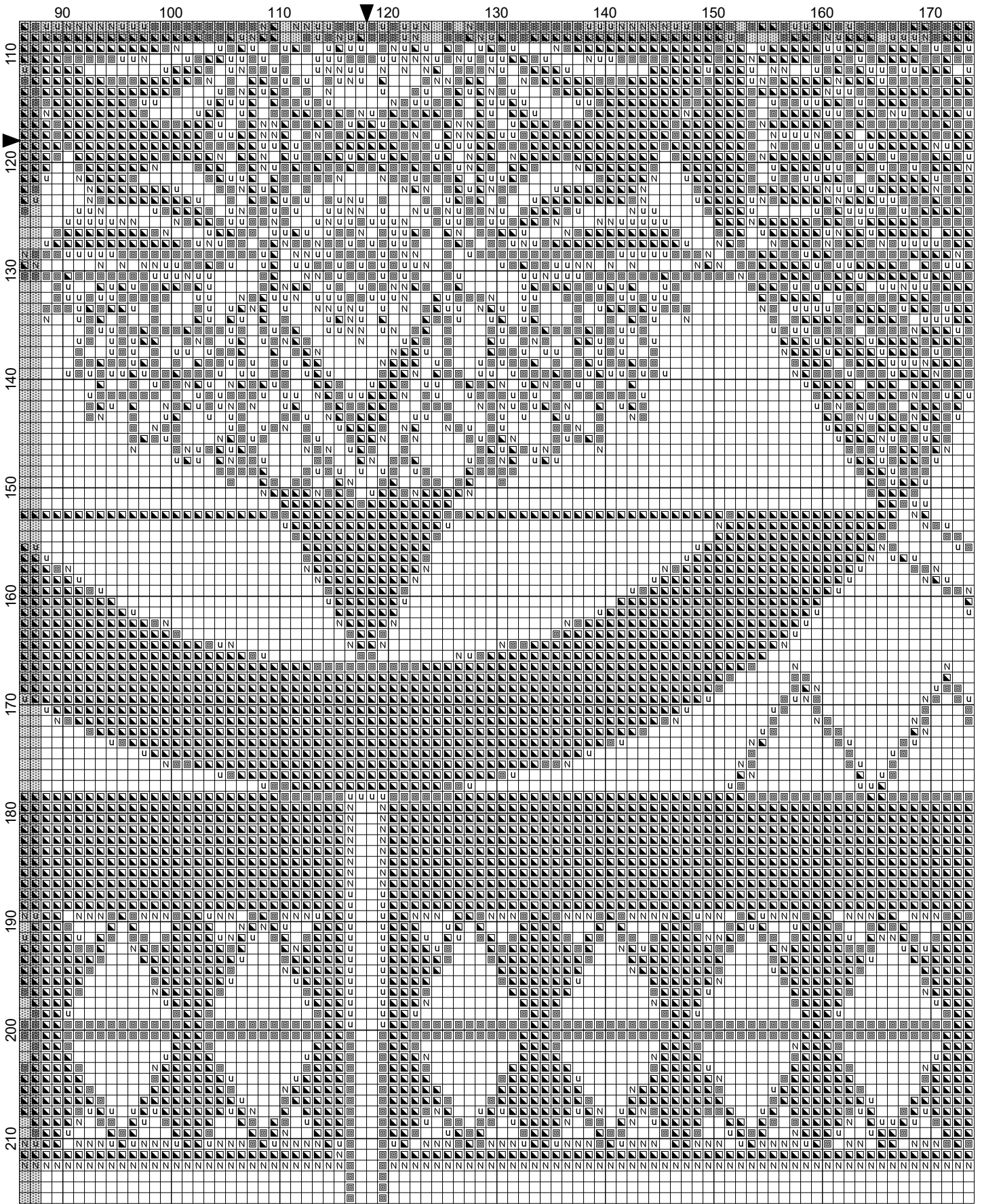
2017

The Elements by Lisa Lambson



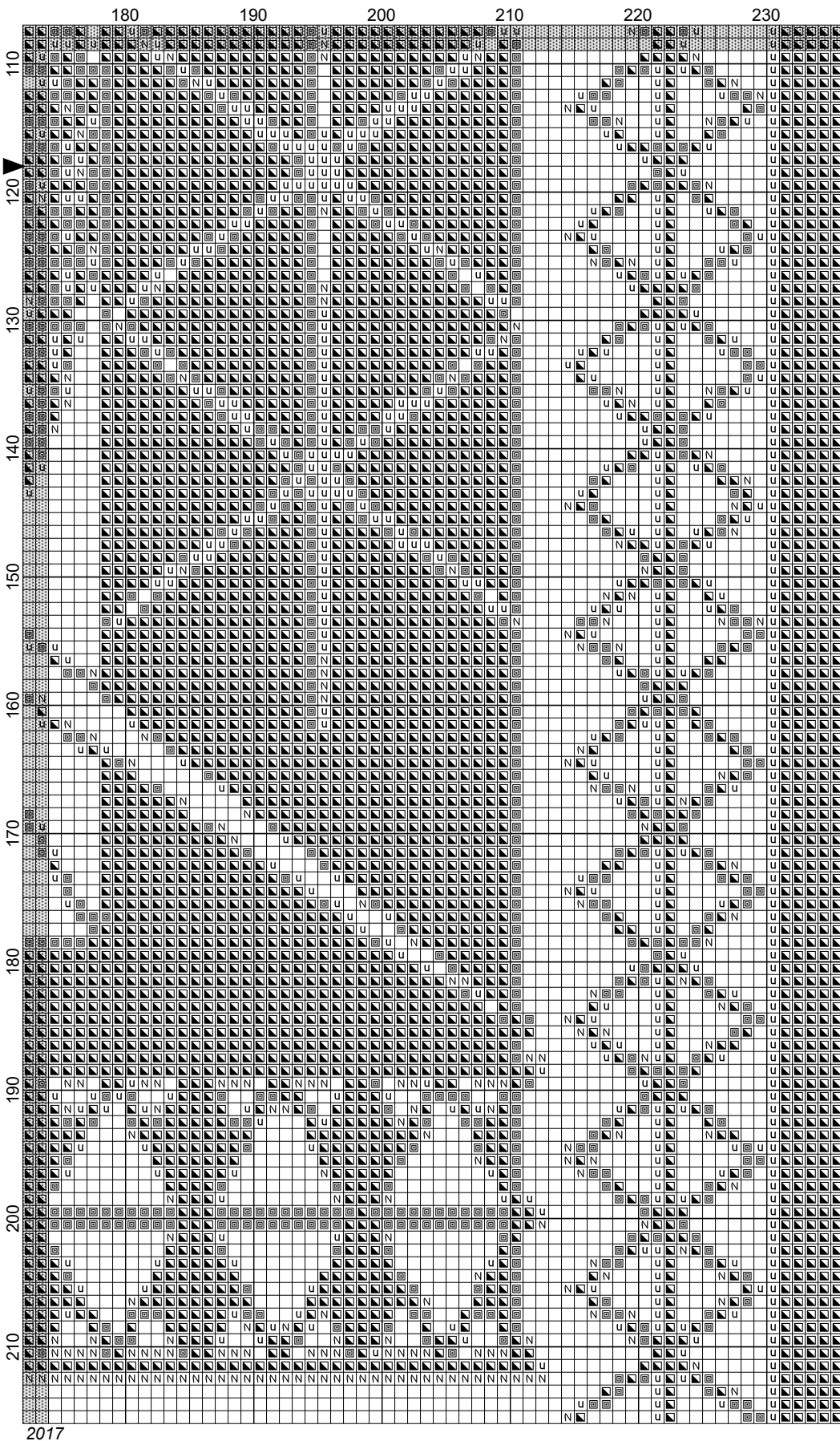
2017

The Elements by Lisa Lambson



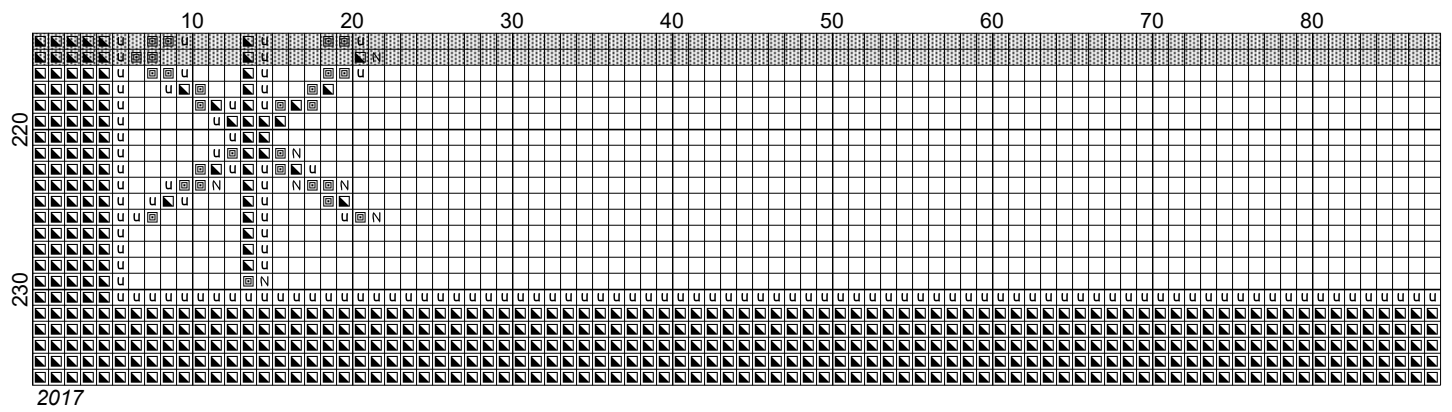
2017

The Elements by Lisa Lambson

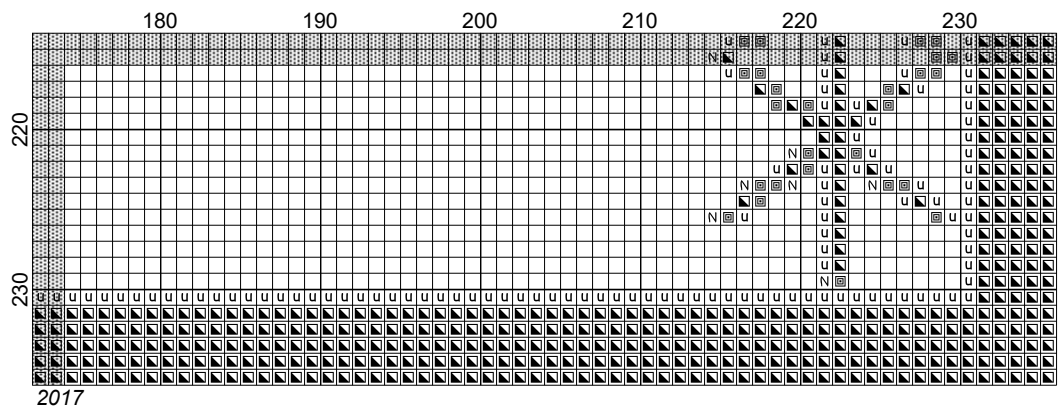


2017

The Elements by Lisa Lambson



The Elements by Lisa Lambson



The Elements

Author: Lisa Lambson
Company: Kustom Cross Stitch
Copyright: 2017
Website: kustomcrossstitch.com
Grid Size: 236W x 236H
Design Area: 13.11" x 13.11" (236 x 236 stitches)



Legend:

	[2]	DMC-3766	ANC-161	JPC-	peacock blue - lt	(3935 stitches, 1.2 skeins)
	[2]	DMC-807	ANC-1039	JPC-	peacock blue	(5168 stitches, 1.6 skeins)
	[2]	DMC-762	ANC-234	JPC-	pearl gray - vy lt	(1920 stitches, 0.6 skeins)
	[2]	DMC-3765	ANC-170	JPC-7162	peacock blue - vy dk	(24581 stitches, 7.7 skeins)

Working from Charted Designs

Each square on a chart corresponds to a space for a cross stitch on the stitching surface. The symbol in a square shows the floss color to be used for the stitch. The width and height for the design stitch area are given in number of stitches and in inches; centers are shown by arrows at bottom and right-hand side of chart. Locations of backstitches are shown by heavy lines.

A blunt-tipped tapestry needle is used for stitching. A size 24 needle is recommended for stitching on 14-count Aida or perforated paper and on 28-count linen; a size 26 needle is recommended for 32-count linen; and a size 28 needle is recommended for 40-count linen. The correct-size needle is easy to thread with the amount of floss required, but is not so large that it will create a larger hole in the fabric or paper. When threading the needle, insert one end of strand or strands of floss and pull through.

All of our models were stitched using DMC six-strand embroidery floss. Color numbers and names are given for floss. Cut floss into comfortable working lengths; we suggest about 18 inches. When separating the strands, gently pull apart the strands and regroup as indicated by pattern instructions.

Good scissors are a necessary stitching tool to have on hand. They are used to cut fabric and floss. We recommend having two pairs of sharp embroidery scissors—one for cutting floss and one for trimming the perforated paper. Always be careful when using sharp scissors or when trimming your designs.

Getting Started

To begin in an unstitched area, bring the threaded needle from the back through to the front of paper or fabric. Hold about 1/4" of the end of the floss against the back and then secure it in place by catching it in the back loops of your first few stitches. To end one length of floss and begin a new one next to existing stitches, weave through the backs of several stitches before bringing needle to the front. Whenever possible, start stitching in the center (indicated by arrows on chart) of a project.

The number of strands of floss used for stitching will be determined by the thread count of the fabric or paper used and the pattern. Refer to the chart and instructions to determine the number of strands used for cross stitches, backstitches or specialty stitches.

A cross stitch is formed in two motions. Following the numbering in the figures below, bring the needle up at 1, down at 2, up at 3 and down at 4 to complete the stitch. Work horizontal rows of stitches wherever possible.

A 1/4 cross stitch is half of a half cross stitch and should slant inward, depending on the pattern.

Backstitches are worked after cross stitches have been completed. They may lie in any direction and are occasionally worked over more than one square on a chart.

Some raveling may occur as you handle the fabric. To minimize raveling along the raw edges, use an overcast basting stitch, machine zigzag stitch or masking tape, which you can cut away when you are finished.

When you have finished stitching, dampen your embroidery (or if fabric is soiled, wash in lukewarm mild soapsuds and rinse well). Roll in a towel to remove excess moisture. Place facedown on a dry towel or padded surface; press carefully until dry and smooth. Make sure all thread ends are well anchored and clipped closely. Proceed with professional framing, self-framing or finishing, as desired. Note: Dark, saturated colors can run during washing; if this happens, soak in cold water rinses until color lifts from fabric.

Pattern Copyright Kustom Cross Stitch 2015